



**Chambers  
Ireland**

**100**  
YEARS OF ADVANCING  
BUSINESS TOGETHER

# Excellence in Local Government Awards 2023



An Roinn Tithíochta,  
Rialtais Áitiúil agus Oidhreachta  
Department of Housing,  
Local Government and Heritage

**Orsted**

---

Chambers Ireland would like to thank all of the kind sponsors for their involvement in the 2023 Excellence in Local Government Awards.



An Roinn Tithíochta,  
Rialtais Áitiúil agus Oidhreachta  
Department of Housing,  
Local Government and Heritage



# Welcome to the 2023 Excellence in Local Government Awards!



**Fiona Candon**  
President  
Chambers Ireland

This year we are delighted to be celebrating 20 years of the Excellence in Local Government Awards. The awards have transformed over the years with new categories, increased innovation and heightened competition but what has remained a constant is the commitment and dedication of every Local Authority to serving their communities and championing their localities.



**Ian Talbot**  
Chief Executive  
Chambers Ireland

Over the past two decades the places we call home, the ways in which we work, our means of travel and the availability and accessibility of services have changed and expanded significantly. Local Government plays a crucial role in driving forward this growth on behalf of the individuals, businesses, local economies, natural environments and communities they represent.

The focus on sustainability is now more important than ever. Local Government should continue to lead in the creation and promotion of sustainable development plans that will help us reach our national climate action targets and successfully develop robust infrastructure that will secure the prosperity and vibrancy of our towns and cities into the future.

Chambers across the country share this ambition. This year Chambers Ireland has been appointed as a national Sustainable Development Goals Champion, reflecting the efforts of the Chamber network in keeping sustainability at the heart of business and community priorities. Through collaboration, Local Authorities and Chambers can work together on the unified mission of making their local areas attractive places for people to live and work.

We invite you to look through this guide and find out more about the 94 projects and initiatives that have been shortlisted across the 15 award categories. The standard of each application is higher than ever and we hope that you can be inspired and motivated to take away new ideas and implement new proposals in your own region.



# Judges Quotes

## DR. MARK CALLANAN

LECTURER, INSTITUTE OF PUBLIC ADMINISTRATION



The enthusiasm and innovation underpinning different initiatives submitted to these awards continues to impress. This year's projects demonstrate the passion and drive of both elected members and local

government staff to make real improvements to the local community they serve. As part of the judging panel it was a real challenge to identify winners of different categories, such as the quality of the projects shortlisted. Huge credit and congratulations are due to the winners, but also to all those shortlisted.

## KATHERINE FITZPATRICK

CONSULTANT, PEOPLE MAKE PLACES



It was fantastic to see such a broad and diverse range of project applications. What stood out most was the strength of the collaborations and stakeholder engagement, with the most impactful projects being those

that had support and input from across the community, public and private sectors. Other standout projects placed an emphasis on important themes such as inclusion and sustainability.

## SARAH FOLEY

PUBLIC AFFAIRS & COMMUNICATION LEAD, ORSTED



What struck me most through the judging process was the breadth of initiatives undertaken by local authorities up and down the country. From our young, our old, new arrivals to Ireland, and everyone in

between, no community goes untouched by the impact of your work. Congratulations to all shortlisted authorities on your success in bettering your local area and good luck tonight.

## MARK MACAULAY

INNOVATION & STANDARDS SENIOR MANAGER, UISCE EIREANN



This year's entries showcased a broad range of innovative approaches to key challenges around climate change, biodiversity, housing. What was particularly impressive was the use of partnerships,

collaboration and technology to achieve scale and impact. Positive early engagement with citizens and stakeholder groups has secured sustainable engagement and benefits beyond the duration of the projects, well done!"

## TOMMY MOYLAN

DIRECTOR, ASSOCIATION OF IRISH LOCAL GOVERNMENT (AILG)



It was a privilege to again be part of the judging panel for this year's Chambers Ireland Excellence in Local Government Awards. The awards give our local authorities the opportunity to showcase the many

innovative projects that they are delivering to the communities that they serve, on a daily basis. Great credit must go all local authority management, staff and Elected Members for their hard work. As always the hardest part for the judges is picking the winner, however huge credit to all entries for their tremendous work.

## HANNAH MUIRHEAD

HEAD OF INTERNATIONAL OPERATIONS, LOCAL GOVERNMENT INFORMATION UNIT (LGIU)



Being part of the judging panel this year was an inspiring experience, with so many of the submissions showcasing remarkable innovation, collaboration, engagement, and a wonderfully diverse range of

projects. When I'm speaking to councils from around the world in the coming months I have so much excellent practice from Irish local government to reference and I love being able to pass on some of the inspiration.

**DIARMUID O'LEARY**

DEPARTMENT OF HOUSING, LOCAL GOVERNMENT AND HERITAGE



Once again this year, the standard and variety of projects undertaken by local authorities was simply outstanding. The innovative and dynamic manner in which local authorities are making our communities better places to live, work and enjoy is an enormous credit to elected members, officials and all who work tirelessly across our 31 local authorities areas. Warmest congratulations to all.

**DR. SEAN O'RIORDAIN**

CHAIR, PUBLIC POLICY ADVISORY NETWORK



The Chambers Local Government Awards highlight the high level of best practice in public service delivery that is a hall mark of the local government system in Ireland. Working with their communities the local authorities are the only democratic platform at local level which enables local communities to see improvements in their areas on a consistent basis. The Awards give a testament of excellence to those best performing Authorities and the fact that so many of them get short listed for an award indicates a system of local public service dedicated to local improvement.

**LOUISE PURCELL**

DEPARTMENT OF HOUSING, LOCAL GOVERNMENT AND HERITAGE



Year after year, local authorities excel themselves through the innovative and valuable work they do. Each year, the applications are evident of a local government sector that exhibits the variety and diversity of roles they have and continue to develop as time goes on. The judging process is a difficult one and all applicants must be acknowledged and commended for the excellent work they do.

**DR. BRÍD QUINN**

CONSULTANT (FORMERLY, DEPARTMENT OF POLITICS &amp; PUBLIC ADMINISTRATION, UNIVERSITY OF LIMERICK)



It is a honour to be involved in the ELG Awards which showcase the innovations and improvements implemented by our local authorities despite the constraints under which they work. The range of projects submitted, the responsiveness and the community involvement are impressive. I urge the teams to increase citizens' awareness of these remarkable projects. Tréasláim leis na hiomaitheoirí agus le Chambers Ireland.

**KAREN SMYTH**

HEAD OF POLICY AND GOVERNANCE, NORTHERN IRELAND LOCAL GOVERNMENT ASSOCIATION



It's always great to see the good practice and innovative ideas that councils in Ireland are taking forward. When I can see the huge impact some of these projects have had, it gives me a lot of food for thought, and opportunity to explore how similar ideas could be put into practice by the 11 councils north of the border.

**MARTIN TOBIN**

CHIEF EXECUTIVE, EUROPEAN RECYCLING PLATFORM IRELAND (ERP IRELAND)



The incredible high standard of entries for the Excellence in Local Government Awards has made this year's judging very difficult and I commend all those that have been shortlisted. It is inspiring to see the breath and diversity of programmes by Local Authorities to educate and take action across a various range of initiatives to positively impact our social and natural environment. The circular economy is the pathway towards a more sustainable future. Our transition to a circular economy will require action from all sectors of society and programmes like those championed by Local Authorities further demonstrates the valuable role they play.

# Contents



## SUPPORTING SUSTAINABLE COMMUNITIES

Clare County Council	7
Fingal County Council	7
Kildare County Council	8
Limerick City & County Council	8
South Dublin County Council	9

## DIVERSITY & INCLUSION

Cavan County Council	10
Donegal County Council	10
Dublin City Council	11
Dún Laoghaire-Rathdown County Council	11
South Dublin County Council	12
Waterford City and County Council	12
Wexford County Council	13

## FESTIVAL OF THE YEAR

Cork City Council	14
Dún Laoghaire-Rathdown County Council	14
Fingal County Council	15
Kildare County Council	15
Longford County Council	16
South Dublin County Council	16

## SUPPORTING TOURISM

Cavan County Council	17
Limerick City & County Council	17
Louth County Council	18
Waterford City and County Council	18
Wexford County Council	19
Wicklow County Council	19

## PROMOTING ECONOMIC DEVELOPMENT

Clare County Council	20
Donegal County Council	20
Kerry County Council	21
Kildare County Council	21
Limerick City & County Council	22

## LOCAL AUTHORITY INNOVATION

Cork City Council	23
Dún Laoghaire-Rathdown County Council	23
Limerick City & County Council	24
Louth County Council	24
Monaghan County Council	25
Wicklow County Council	25

## SUSTAINABLE ENVIRONMENT & BIODIVERSITY

Clare County Council	26
Dublin City Council	26
Dún Laoghaire-Rathdown County Council	27
Kildare County Council	27
Meath County Council	28
Monaghan County Council	28
South Dublin County Council	29

## COMMUNICATIONS

Cork City Council	30
Fingal County Council	30
Kildare County Council	31
Laois County Council	31
Limerick City & County Council	32
Longford County Council	32
Waterford City and County Council	33

## CLIMATE CHANGE

Cork City Council	34
Kildare County Council	34
Limerick City & County Council	35
Meath County Council	35
South Dublin County Council	36
Waterford City and County Council	36

## SUSTAINING THE ARTS

Carlow County Council	37
Cork City Council	37
Dún Laoghaire-Rathdown County Council	38
Limerick City & County Council	38
Meath County Council	39
South Dublin County Council	39

## HEALTH & WELLBEING

Clare County Council	40
Dún Laoghaire-Rathdown County Council	40
Kildare County Council	41
Limerick City & County Council	41
South Dublin County Council	42
Wexford County Council	42
Wicklow County Council	43

## MUNICIPAL DISTRICT INITIATIVE

Clare County Council	44
Cork City Council	44
Kildare County Council	45
Limerick City & County Council	46

## URBAN REVIVAL

Clare County Council	47
Cork City Council	47
Kerry County Council	48
Kildare County Council	48
South Dublin County Council	49
Waterford City and County Council	49
Wexford County Council	50

## HERITAGE AND BUILT ENVIRONMENT

Cork City Council	51
Dún Laoghaire-Rathdown County Council	51
Fingal County Council	52
Galway County Council	52
Kildare County Council	53
South Dublin County Council	53
Waterford City and County Council	54

## AGE FRIENDLY INITIATIVE

Cork City Council	55
Kildare County Council	55
Kilkenny County Council	56
Limerick City & County Council	56
Wexford County Council	57
Wicklow County Council	57

## UN SUSTAINABLE DEVELOPMENT GOALS

58



# SUPPORTING SUSTAINABLE COMMUNITIES



## CLARE COUNTY COUNCIL

### Clare Library Service - World of Welcome Project



The World of Welcome project set out to welcome new children and their families to their local communities by visiting their local libraries on a regular and consistent basis for a 6-week period. Recently arrived migrant families got to experience what Clare libraries have to offer as a provider of information on local amenities and facilities and as a source of literacy and artistic learning for adults and children alike through print and digital resources collections. The library promotes itself as a place of welcome offering a space, a collection of literary resources for pre-schoolers to senior citizens and a place where a diverse programme of outreach activities is available to everyone in the community.



## FINGAL COUNTY COUNCIL

### Fingal Welcome Rooms



Recognising the importance of supporting communities and providing a helping hand where needed, Fingal County Council’s Welcome Rooms involved the re-purposing of a space in community centres to resemble a typical living room. This warm, welcoming room is where people can drop in and spend some time relaxing with a cuppa, chatting to others, reading, or simply having a break from daily living.

Rivervalley, Parslickstown House and Corduff Community Resource Centre were chosen for the pilot which ran over the winter/spring months. They are three very different types of communities. These centres have been welcoming many community groups over the years however this initiative provides extended support for many vulnerable individuals and family groups. Each location provides a free, friendly, safe, and supportive space for all, without the formalities of registration, bookings or a requirement to be part of a group to avail of the project where everyone is welcome.



# SUPPORTING SUSTAINABLE COMMUNITIES



## KILDARE COUNTY COUNCIL

### Kildare Library Service Reader in Residence



Kildare County Council Library Service with the support of Creative Ireland funded the first Reader in Residence programme in the county. The residency was for the period of approximately nine months from May to December 2022. Kildare based children’s writer, Emma Jane Leeson, was selected following a competitive process.

The core purpose of the residency was to engage with children aged 5-12 through community groups and schools, centred around their local library in rural towns in Kildare. The residency also provided opportunities for parents and children to explore and enjoy reading, storytelling, writing and other family literacy activities together.



## LIMERICK CITY & COUNTY COUNCIL

### Student Planners: Inspiring Future Generations



The Forward Planning Department have formulated, trialled, and implemented a schools consultation programme to ensure that children and young people are an integral part of the plan making process and central in shaping the future of Limerick. The programme has been developed in two strands for both primary and secondary schools and has been formulated having regard to the school curriculum in both strands. The programme includes the use of an interactive mapping tool, which allows students to get out on-the-ground themselves and with the map, follow their location, marking what issues/ concerns and ideas they have for their local area. In addition, school children are encouraged to make formal submissions to the plan making process. Since 2019, over 1,350 students have engaged with the Forward Planning Department and have influenced and shaped the future development of their local area.







# SUPPORTING SUSTAINABLE COMMUNITIES

## SOUTH DUBLIN COUNTY COUNCIL

### Green Infrastructure Strategy 2022-2028



Green infrastructure is a strategically planned network of natural and semi-natural areas with other environmental features designed and managed to deliver a wide range of ecosystem services such as water purification, air quality, space for recreation and climate mitigation and adaptation.



SDCC delivered a Green Infrastructure Strategy which forms the basis for the identification, protection, enhancement, and management of the Green Infrastructure network within the County. The Green Infrastructure Strategy Forms Chapter 4 of SDCC's County Development Plan 2022-2028.

## WEXFORD COUNTY COUNCIL

### Enniscorthy Community Allotments

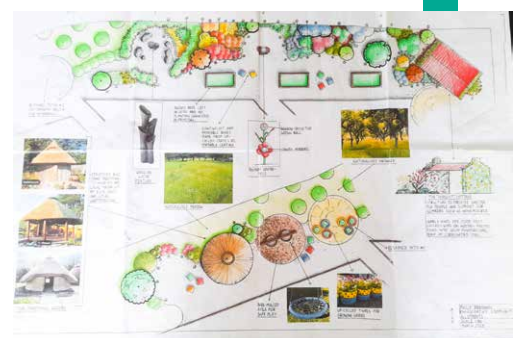


Enniscorthy Community Allotments (ECA) is an innovative initiative that brings together a diverse group of individuals to create a thriving, sustainable, and inclusive gardening community in the heart of Enniscorthy.

Established in April 2022, ECA has developed an impressive facility, featuring 64 allotment plots, 27 raised beds, a communal polytunnel, and a range of recreational and utility areas. Driven by a mission to promote community spirit, healthy lifestyles, and enhance biodiversity, ECA has successfully partnered with local organisations and businesses, providing educational workshops and employment opportunities.

The allotment site serves as an inclusive space, welcoming community groups and individuals of all ages, ethnicities, and abilities.

ECA's commitment to excellence has been recognised through numerous awards, including the Overall Winners of Wexford County Council's "Keep Wexford Beautiful" Competition, the National Winner of Energia Get Ireland Growing - Best Garden Transformation, and National Winner of the All-Ireland Community and Council Awards 2023.



# DIVERSITY & INCLUSION



## CAVAN COUNTY COUNCIL

### GAA County All Stars Programme



An inclusive GAA programme for children with a disability in conjunction with Cavan G.A.A to provide a fun inclusive GAA programme suitable to children’s needs and promote social interaction and enable some children to participate in GAA for the first time. Cavan Sports Partnership linked with Cavan GAA County board and identified a need for an inclusive GAA programme for children with a disability in the county. To ensure the initiative could facilitate every child and provide 1 to 1 assistance where necessary a callout was made to all clubs to provide volunteers, which resulted in 100 coaches supporting the programme, with inclusion training being provided in advance. The programme was delivered through 6 local G.A.A Clubs spread across the county for 10 weeks each, concluding with an end event in Breffni Park, with 81 children completing the programme.



## DONEGAL COUNTY COUNCIL

### AMBITION



The AMBITION business accelerator programme provides Donegal women entrepreneurs with the tools and resources to create successful businesses and attain economic empowerment. The 14-week programme includes one-to-one mentorship, peer support, 12 comprehensive workshops, and dozens of guest speakers. Workshops cover core topics such as problem framing, customer discovery, value proposition development, market sizing, and business growth. Additionally, masterclasses are offered on themes such as digital marketing, product design, performance KPIs, presentation skills, risk analysis and team building. AMBITION is founded on five key pillars: a structured and integrated approach to skills development and mentorship, individualised support, a focus on cutting-edge techniques and best practices, the correct elements at the right time, and curated networks. Throughout the programme, participants explore personal attitudes to ambition, business culture and values, entrepreneurship, leadership, networking and network development, and resilience.





DUBLIN CITY COUNCIL

Library in the Community



The outreach ‘Library in the Community’ service echoes the use of space in branch libraries but extends reach outside of library buildings, offering services and programming to existing and potential new patrons, with face-to-face contact with library staff promoting the range of services and the benefits of library membership. Dublin City Council aim to provide a streamlined, responsive service using a hybrid of physical and virtual services.

‘Library in the Community’ has increased access to library services, resources and programming and created greater opportunities for everybody in society with a focus on marginalised and isolated groups. It offers a range of services to people including presentations on library services, information sessions, one to one digital literacy training, home delivery services, pop up libraries, outreach book collections, story times, and the hosting of cultural events in community locations.

DÚN LAOGHAIRE-RATHDOWN COUNTY COUNCIL

Enhancing Traveller culture and ethnicity in Dún Laoghaire-Rathdown



This project is a collaborative approach with local Traveller representative organisation (Southside Traveller Action Group - STAG) and the Local Traveller Accommodation Consultative Committee. It is designed to develop new initiatives that promote and enhance Traveller culture and ethnicity in Dún Laoghaire-Rathdown and improve the service the Council provides to the Traveller community.

Using Dormant Account Funding, Dún Laoghaire-Rathdown County Council engaged an independent external consultancy firm to help design and conduct workshops and focus groups with local Travellers about specific topics. Ideas and suggestions originating from the people who participated in the focus groups were recorded, considered, and where practicable, implemented.

The initiative was focused on building relations between the Council, the local Traveller community, and local Traveller organisations. It has provided a structured process through which issues that are important to the local Traveller community can be identified and acted on.



# DIVERSITY & INCLUSION



## SOUTH DUBLIN COUNTY COUNCIL

### Voices of Ukraine



Since the Russian and Ukrainian conflict began, the United Nations migration agency has estimated that more than 12 million people have been displaced from their homes in Ukraine.

South Dublin County has a significant non-Irish-national population, with 13.2% of its residents originating from other countries. It is expected that many Ukrainian refugees will seek refuge in Ireland, and some may end up in direct provision. This experience can lead to feelings of isolation, social exclusion, and disadvantage for many individuals.

Public libraries across the country have been actively engaging with refugees, offering a safe haven. In South Dublin, the library service has provided a welcome pack translated into Ukrainian, while also offering space, IT facilities, English language classes, and Ukrainian books.

North Clondalkin Library wanted to go beyond these services and create a meaningful connection with Ukrainian refugees, giving them a platform to share their compelling stories.



## WATERFORD CITY AND COUNTY COUNCIL

### Waterford's Ukrainian Refugee Response Project



Since the outbreak of war in Ukraine in February 2022 Ireland took a major role in assisting Beneficiary of Temporary Protection (BOTP) into the country.

Waterford City & County Council has been actively working to ensure that any arrivals into their four Emergency Centres receive the full support package by endeavouring to provide these short-term residents in the Emergency Centres with longer term suitable accommodation in Waterford. This is sourced from local and national pledge callouts and the refurbishment of vacant commercial properties by WCCC. These are now secured with longer term leases and refurbished for longer term independent living.

WCCC works with partner agencies ensuring the provision of medical/financial/language/educational support and access to social integration and employment opportunities. Family reunification and community integration is a key focus and a year later most of the pledge licence agreements have been renewed for another period of time.





**WEXFORD COUNTY COUNCIL**

**Travelling Tales, visual arts and writing project for Traveller Children**



Through this writing and visual arts project, Traveller children worked with a writer, artist, teachers, and adults from their community to explore their cultural identity and develop links with their local library. Linking in with a Traveller artist online, they discussed issues such as employment, future aspirations, gender roles, the importance of home and the relevance of nomadic life in Traveller culture.



In this collaborative project they wrote and illustrated stories, some in Gamin, for the book Travelling Tales. They represented their faith and traditions through ceramics and textiles and constructed their replica house. They made puppets to animate their stories in film. The Travelling Tales book and exhibition enabled them to share their understanding of what it means to be a Traveller in the 21<sup>st</sup> century with the wider community through the library service. A final showcase of the project, exhibition and publication was highlighted through local media and online.

# FESTIVAL OF THE YEAR



## CORK CITY COUNCIL

### The Cork LGBT+ Pride Festival



The Cork LGBT+ Pride Festival has always been run by the community, for the community. Over the past 18 years, the Cork LGBT+ Pride Festival has grown in attendance and popularity to become the main regional LGBT Pride event in Ireland, and is now one of the premier annual festivals in Ireland.



Cork Pride is about bringing all communities together, and creating visibility and awareness in the wider community - Pride is as relevant and as important now as it ever was. It is imperative to maintain and further the progress that our LGBT+ communities have made through Pride over the past 50 years; the Pride Movement is one of the most successful human rights campaigns in history.

Pride began as a protest, but has developed over the years into celebrations of diversity, equality, and inclusion - nowhere is this more apparent than at Cork Pride.

## DÚN LAOGHAIRE-RATHDOWN COUNTY COUNCIL

### dlr Festival of Inclusion 2022



The Dún Laoghaire-Rathdown Festival of Inclusion 2022 took place during September & October 2022 to promote, highlight and raise awareness of Equality, Diversity & Inclusion programmes, activities and services available in the area.



The annual Festival of Inclusion 2022 hosted and organised by Dún Laoghaire-Rathdown County Council (DLRCC) was the biggest festival yet. Almost 8,000 people participated in celebrating social inclusion initiatives across the county.

The Dún Laoghaire-Rathdown Festival of Inclusion was a community-based, social inclusion events programme that promoted groups, organisations and volunteers organising activities and events, and offering supports in the community.

Promoting Equality, Diversity and Inclusion in Dún Laoghaire-Rathdown was the overall festival theme and 2022 saw the first 'India Fest' take place. Dozens of organisations and community groups hosted activities, coffee mornings, cultural programmes, entertainment, exhibitions, music, open days, performances, information sessions and talks, as well as free training, workshops and much more across Dún Laoghaire-Rathdown.





# FESTIVAL OF THE YEAR

## FINGAL COUNTY COUNCIL

### Fingal Ukrainian Festival of Cultures and Communities



Fingal Ukrainian Festival celebrated a day of Ukrainian poetry, dance and music, as the grounds of Swords Castle were transformed into a relaxing multicultural space, where the strong relationships fostered over the previous six months between Fingal residents and their Ukrainian guests were celebrated.

Over 500 Ukrainian families, volunteers and host families attended, as artists from Ukraine took to the stage to entertain.

Ukrainian soap makers and artists delivered interactive workshops. Attendees immersed themselves in the multicultural display of dance, music and art. Whether relaxing at the main stage or wandering among the many stalls, there was ample opportunity to meet old friends and make new connections. This festival highlighted the true spirit of the bond shared by the two countries. It is a testament to the importance of bringing communities together to develop a shared sense of pride in localities and heritage and respect for all.

## KILDARE COUNTY COUNCIL

### Brigid 1500 St. Brigid's Festival 2023



Brigid 1500 is a 2-year programme to celebrate and commemorate St. Brigid; a woman, a life and a legacy. The aim of Brigid 1500 is to create a meaningful cultural and societal legacy that appeals to a diverse contemporary audience. Brigid 1500 engages communities with the story and heritage of St. Brigid, providing a tangible connection with the past through events and programmes.

The programme engages with the values St. Brigid championed, including faith and spirituality, biodiversity and sustainability, arts and culture, social justice, peace, hospitality and education.

A 10-day festival took place to celebrate the inaugural St. Brigid's Bank Holiday, from 28<sup>th</sup> January to 7<sup>th</sup> February 2023. This programme was delivered in partnership with a dedicated Brigid 1500 Steering Committee. The celebrations included a school programme and 4 large flagship events alongside various community events delivered via a grant scheme and in collaboration with partner agencies.



# FESTIVAL OF THE YEAR



## LONGFORD COUNTY COUNCIL

### Longford Lights Festival



Longford Lights is a festival that uses illuminated arts practices to engage and activate citizens in a large art-making festive event. In late February 2023, Artistic Director Tom Meskell and Longford County Council’s Arts Office staged the largest outdoor community Lantern festival ever held in Ireland, in Connolly Barracks, Longford Town. Almost 12,000 citizens attended a 3-day festival in which 20 national and local artists worked with 400 community members



to create a variety of installations, projections, performances and pyrotechnics. Ten groups representing a broad range of citizens participated including participants from schools, youth projects, ethnic minority groups, men sheds, women’s support groups and disability groups. Longford County Arts Services produced the festival directly involving other departments in the council including roads, facility management, health & safety and library services.

## SOUTH DUBLIN COUNTY COUNCIL

### Balgaddy Better Block Event



Balgaddy is a social housing development of approximately 450 homes. The goal was to re-envision the grassy open space area next to the Balgaddy playground and sport courts in a two-day, community-led placemaking event that would help residents, small businesses, and community groups to get creative with their neighbourhood space.

Using a resident survey to guide the design, changes include the arts, greenery and landscaping, a pop-up market, and opportunities for a community gathering in an underutilised open space. This trial helped to create a safe, welcoming neighbourhood space for all ages and backgrounds and incorporated the resident’s vision for Balgaddy. Additionally, the project tested some ideas and received feedback that will be incorporated into the long-term vision of Balgaddy. The event took place from the 16<sup>th</sup> until the 17<sup>th</sup> of July 2022.







# SUPPORTING TOURISM

## CAVAN COUNTY COUNCIL

### Cuilcagh Lakelands Geopark Business Sustainability Network



Cuilcagh Lakelands UNESCO Global Geopark became the world’s first transnational Geopark in 2008, covering West Cavan and west Fermanagh. The Geopark has over 50 sites that encompass a fascinating variety of geology, natural landscapes, and intangible heritage that welcomes locals and visitors from all over the world.

With a growing market of visitors, looking for more sustainable options whilst travelling and providing sustainable regenerative tourism are becoming key priorities.



The idea of this programme was to give a comprehensive and holistic understanding of sustainability. The three pillars of sustainability (people, planet, and profit) were intentionally integrated into training. In the environmental section, the programme covered biodiversity, Leave No Trace and climate action topics such as energy, water, and waste management. Within the business and economic strand on marketing the Geopark together training was delivered on accessibility, inclusivity and creating a collaborative approach to marketing the Geopark.

## LIMERICK CITY & COUNTY COUNCIL

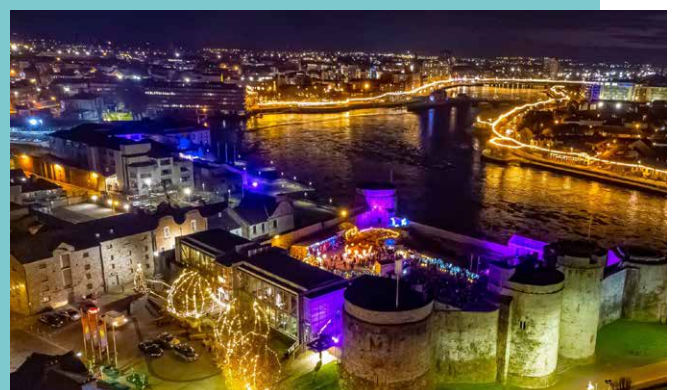
### Discover Limerick



The Limerick Wild Atlantic Way Gateway City Strategy envisions Limerick as a compelling destination for visitors and a base for exploring the Wild Atlantic Way. Limerick City and County Council, as leading stakeholders of this strategy, has led the development of an overall promotion theme of ‘Discover Limerick.’

Discover Limerick DAC was established by Limerick City and County Council as a designated activity company to own, operate and develop tourism attractions in Limerick. The DAC strategically aligns Limerick’s saleable tourism experiences, under a single brand, Brand Limerick, and the Tourism Department of the Council.

The first tourist attraction in the DAC, King John’s Castle transferred from Shannon Heritage to Discover Limerick DAC on 4 April 2022. Other sites include Lough Gur Heritage Centre and Adare Heritage Centre.



# SUPPORTING TOURISM



## LOUTH COUNTY COUNCIL

### Sea Louth Scenic Seafood Trail



Sea Louth Scenic Seafood Trail captures what's best about County Louth's 70km+ coastline, the stunning scenery and of course the finest local seafood.

Explore the roads less travelled, meet local characters, breathe the salty sea air, see where the proud seafood producers land their catch, eat fresh local dishes by the coast, admire the spectacular views and create memories that will last a lifetime ...

Come 'see, eat & admire' Louth.



## WATERFORD CITY AND COUNTY COUNCIL

### Reinvigorating one of the great gardens of the world - Mount Congreve



Mount Congreve House was home to six generations of the merchant family of Congreves and was built in the 1760s by the celebrated architect John Roberts and remodelled in the 1960s.

Under the redevelopment works a re-invigoration of the gardens has taken place under the vision of the Garden Curator Michael White, the result of which is an iconic visitor experience, with improvements to the garden infrastructure, the establishment of new plant collections and the installation of creative play features that tell the story of Mount Congreve, new pathways, orientation plus a woodland playground for the gardens very young visitors.

In addition at the 18<sup>th</sup> Century mansion house, a new purpose-built visitor centre has been created in the existing courtyard and former stables in the Eastern wing of the house





# SUPPORTING TOURISM

## WEXFORD COUNTY COUNCIL

### Celtic Routes



Celtic Routes is a collection of authentic Celtic experiences found in three counties in Wales and in Ireland, all connected by the Irish Sea. The project aims to convert potential visitors transiting through, into staying visitors and to increase sustainable economic development by maximising visitor spend, income retention, adding value to the combined tourism offerings within the region all through a tailored marketing and promotional campaign for our visitors and tourism providers, supported by the Partners.

The project creates a sense of place, boosting collaboration and encourage partnerships across the six counties, and support shared learning.

The project helps visitors get closer to the Celtic Spirit which still lives in West Wales and Ireland’s Ancient East. They focus on the things which underpin their connection to the present to the past. They tell the stories that reveal the character of place and explore the shared history of Ireland and Wales.



## WICKLOW COUNTY COUNCIL

### Samuel Hayes Bridge

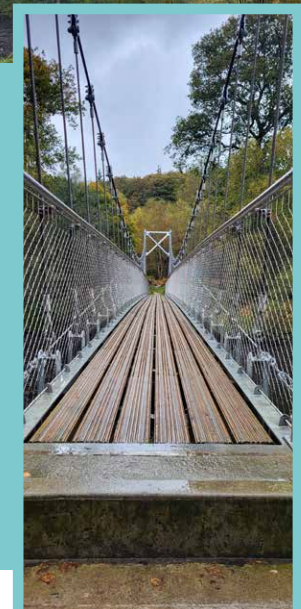


Wicklow is fortunate to have so many areas of outstanding scenic beauty on its doorstep. The forest area where the Samuel Hayes Bridge is located is one of these such areas. The bridge improves the linkage to two popular walks, the Jubilee Walk and the Avonmore Way and it enhances the experience for both locals and visitors to the area.

The bridge feeds into delivery of the Wicklow Outdoor Recreation Strategy by linking the hubs of Rathdrum and Laragh and by aligning with the Glendalough and Wicklow mountains masterplan which outlines the need for multi access trails in the Rathdrum area.

The bridge is named after Samuel Hayes (1743-1795) who was a member of parliament, barrister, amateur architect, antiquarian, planter, and kinsman of Charles Stewart Parnell. Hayes designed and built Avondale House and estate in 1777.

The Samuel Hayes bridge was officially opened in June 2021.



# PROMOTING ECONOMIC DEVELOPMENT



## CLARE COUNTY COUNCIL

### Female Entrepreneurship and Leadership



Local Enterprise Office Clare (LEO) created a pilot programme to work with 10 female entrepreneurs who had a business growth ambition. This was a specific, targeted, and focused programme designed to support female entrepreneurs. The primary aim of the initiative was to enhance the viability and growth potential of female led enterprises. It also aligned with a core objective of the LEO, to develop female entrepreneurship.



The programme ran over 10-months using a combination of training, workshops and network events supplemented by financial supports. This programme had several unique differentiators, but a key element was the recruitment of participants. This involved an initial one-to-one engagement with prospective participants to assess current business models, growth potential with a positive bias towards developing export markets and capability to achieve ambitious growth objectives. The key element was the willingness of the female business leaders to commit to the programme in its entirety.

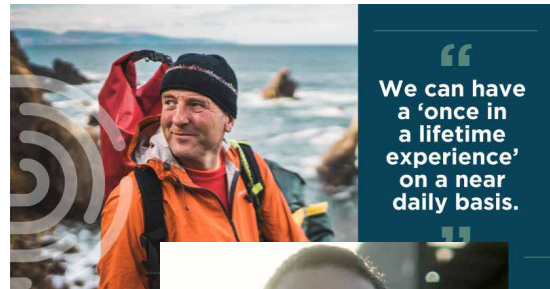
## DONEGAL COUNTY COUNCIL

### #MoveToDonegal Relocation Campaign



The #MoveToDonegal relocation campaign was developed to promote County Donegal as an attractive destination to live, work, study and do business.

The relocation campaign promotes Donegal as a desirable and viable relocation option by creating and delivering a multi-pronged digital marketing campaign to drive traffic to Donegal.ie/move, where those interested in relocating could sign up to get more information.



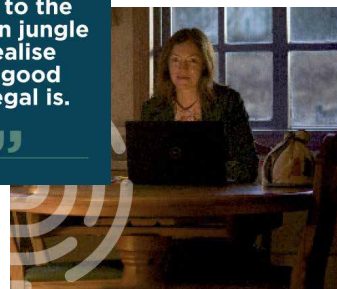
“ We can have a ‘once in a lifetime experience’ on a near daily basis. ”



“ Ultimately everyone strives for a good work-life balance and for me, this was achieved by relocating to Donegal. ”



“ I had to go down to the Amazon jungle to realise how good Donegal is. ”



“ I couldn't have dreamt of this pre-COVID. Now it's a possibility as remote working is encouraged. ”



# PROMOTING ECONOMIC DEVELOPMENT



## KERRY COUNTY COUNCIL

### Kerry Food Hub



The Kerry Food Hub is a not-for-profit community project located strategically in the centre of the county at Firies, Co Kerry. The Kerry Food Hub is managed strategically by a board of social entrepreneurs.



The Hub's purpose-built food production facilities provide start-up entrepreneurs and small but growth-oriented food businesses the opportunity to expand and develop at a rate that would be far more difficult to achieve without easy access to a dedicated and high-quality food-production unit. Since opening in 2016, the Hub's artisan occupants have built strong relationships with foodservice industry professionals in their key market, the tourism stronghold of Killarney. They have also found the Hub a great location from which to serve retail outlets from Killarney to Tralee.

In 2022, The Kerry Food Hub, completed ten new 1,000sq ft food grade production units and launched the artisanmarket.ie, a multi-vendor online marketplace linking artisan food producers and professional buyers.

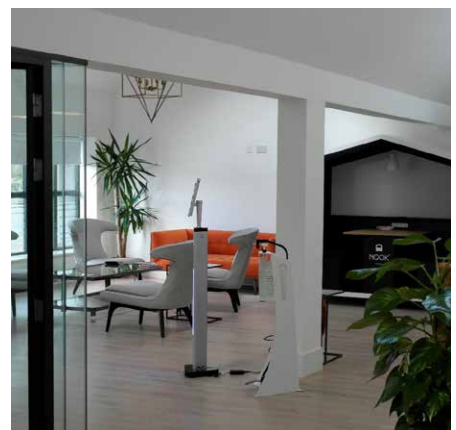
## KILDARE COUNTY COUNCIL

### Connected Hubs - Kildare Hub Network



The delivery of a Kildare Hub Network, guided by the implementation of the Kildare Hub Strategy (2022-2025) acts as a means of supporting new enterprises, harnessing entrepreneurial talent and skills and investment through hub provision across the county.

There was no strategy in place, and this was developed to ensure that Hubs could strategically become a primary instrument in stimulating indigenous enterprise and promoting innovation across the local SME base but also act as workspaces for remote workers who wish to locate or relocate to Kildare. Hubs also play an important societal function in promoting a quality of life and healthy work / life balance. The hubs support other strategic development objectives including decarbonisation, town centre renewal, digitalisation in SME's and building strong communities of entrepreneurs. Strategically, Enterprise Hubs are a key mechanism for supporting priority sectors including the knowledge/tech economy; advanced manufacturing; Agri-Food; the Equine sector and the Green Economy.



# PROMOTING ECONOMIC DEVELOPMENT



## LIMERICK CITY & COUNTY COUNCIL

### Engine Collaboration Centre



Through consultation with industry partners and entrepreneurs, Innovate Limerick identified the need to build on the innovative capacity of the Mid West Region.

The Engine Collaboration Centre has been developed with this in mind and is used as a driver of collaboration between multi-national companies (MNC's), small-medium enterprises (SME's) and start-ups to co-work on shared problems, to explore, investigate, develop solutions, and innovate together.

This state-of-the-art facility was completed in December 2022 and is located in the heart of Limerick's Georgian Innovation District. The Engine Collaboration centre seeks to maximise the innovative benefits and strengths arising from collaboration and the co-location of disruptive technology expertise to support all levels of regional technology in the Mid-West.





# LOCAL AUTHORITY INNOVATION



## CORK CITY COUNCIL

### Lancaster Quay Cost Rental Apartment



Cork City Council noticed the need for modern, affordable rental accommodation in a more enhanced city centre suitable for a young, vibrant, working population wishing to live and work in the city and enjoy the urban experience.

73 of the 88 homes constructed at Lancaster Quay are designated as affordable cost rental homes while the remaining 15 homes are available to social tenants. These apartments in the Lancaster Gate development are highly sought after due to their high quality and excellent location in the heart of Cork city and next door to University College Cork.

Initially promoted by Cork City Council, this scheme of new homes is now owned and managed by Covid Housing Association and was delivered in September 2022.



## DÚN LAOGHAIRE-RATHDOWN COUNTY COUNCIL

### Beaufort - a unique heat pump district heating system



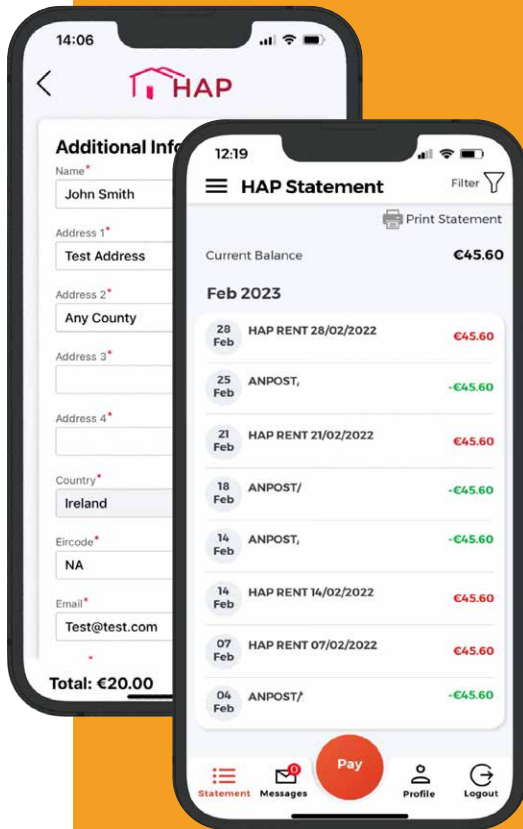
As part of Dún Laoghaire-Rathdown County Council's programme of work under the Energy Efficiency Retrofitting Programme (EERP) 2022, they installed a completely unique heat pump space heating solution in a designated older person's developments.

Originally built in 1984, the Beaufort complex in Glasthule, County Dublin consists of 58 residential apartments across three blocks. Also included in one of the blocks is a daycare centre from which a HSE-funded daycare service is provided to older people living in the county.

The Council undertook a complete retrofit of the development that included installing external insulation, new windows and doors, LED lighting and solar panels. The innovative installation of the district heating system approved under the EERP is the first of its kind in the country. It provides greater energy savings than standalone heat pumps, higher BER ratings for the apartments and significant financial savings.



# LOCAL AUTHORITY INNOVATION



## LIMERICK CITY & COUNTY COUNCIL

### HAP APP



The HAP app is a new innovative digital development for the Housing Assistance Payment Shared Service Centre (HAPSSC) in an effort to enhance the HAP customer (59,000 tenants) experience nationwide.

The HAP app allows each HAP tenant to view their HAP rent account balance in real-time, access/download and share statements and make a payment on their mobile phone. The app is available to use by all local authority tenants availing of HAP across the country.

This development built on the success of the web payment facility rolled out in June 2018. It acts as a one stop shop for HAP tenants nationwide - accessible to approximately 59,000 HAP customers.

It also helps promotes self-service, allowing HAP tenants to manage their own account, check their balance, and pay their rent or any arrears without the need to contact the HAP SSC or their local authority.

## LOUTH COUNTY COUNCIL

### Response to the Ukraine Crisis



Louth County Council promptly addressed the arrival of displaced Ukrainians in Ireland. They mobilised a Crisis Management Team, which initially focused on two key priorities: establishing a temporary rest centre to promptly receive refugees arriving from across the country, and identifying local, short-term accommodation solutions for more sustainable living.

To achieve this, the council repurposed its own sports centre as a temporary rest centre. The centre is managed by the sports centre staff in collaboration with council personnel and statutory agencies.

In parallel, council staff identified and facilitated local properties for refurbishment for medium-term accommodation to offer the best outcome for the beneficiaries and for the local community. The Community Response Forum and Inter Agency group were activated and engaged immediately in the project. A facilities management company were engaged to manage the refurbished sites. Later, a Ukrainian speaker was recruited as an OfferAtHome Relationship manager, to support owners and beneficiaries and Ukrainians in Louth.







# LOCAL AUTHORITY INNOVATION



## MONAGHAN COUNTY COUNCIL

### MyCoCo - Delivering Local Authority Services Online



MyCoCo is a one stop shop for local authority services. It is a local authority-led build-to-share initiative that provides secure online services to the public and elected representatives. It has proven to provide services users want, and reduce service delivery times, and duplication.



Local authorities provide over 1,000 services. MyCoCo is a key enabler for local authorities to deliver on the Connecting Government 2030 ambitions which include that 90% of public services will be consumed online by 2030. MyCoCo provides smaller authorities with the ability to provide digital solutions for services where the volume of transactions wouldn't justify the development costs at a local level, for example solicitor services.

MyCoCo is a unique collaboration across 13 local authorities (Monaghan, Dún Laoghaire Rathdown, Laois, Clare, Sligo, Cavan, Leitrim, Mayo, Kildare, Kerry, Carlow, and Meath County Councils and Galway City Council) and is supported by the LGMA and central government departments.

## WICKLOW COUNTY COUNCIL

### Wicklow County Council Innovation - Solar Car Park



For Wicklow County Council (WCC) to reach their 2030 energy and carbon reduction targets, innovative solutions were required to decarbonise their building stock and incorporate more renewable energy. In response to this the Council carried out a feasibility study on incorporating solar photovoltaic to the council's headquarters, its largest municipal building. The Council proposed a solar array in their car park producing 40% of the building's electricity demand. The project used a power purchase agreement which resulted in no upfront capital cost to the local authority.

The solar car park project installed at council headquarters is the first public sector solar car park, generating renewable energy and assisting with achieving energy & carbon targets. This innovative project is the largest solar car park project in Ireland covering 107 car park spaces and 1600m<sup>2</sup> at County Buildings. The 300kWp of solar panel capacity for WCC commenced production of solar energy in July 2022.



# SUSTAINABLE ENVIRONMENT & BIODIVERSITY



## CLARE COUNTY COUNCIL

### The Burren and Cliffs of Moher UNESCO Global Geopark



Clare County Council has worked in the Burren since 2007 to ensure a balance between tourism and conservation. First through the Burren Connect project, and then with the UNESCO Global Geopark, they have been helping to create a sustainable tourism destination that provides tangible benefits to the local community, promotes and celebrates local culture, and preserves the environment.

UNESCO is one of the most widely recognised brands of quality in the world and maintaining their status requires a strong commitment from the Council and its partners to meet the standards required. The UNESCO Global Geopark designation underlines the deep social sense of the Burren area as a unique place to live that is deeply embedded in the traditions and culture of local communities, and has a strong education programme that provides information to local communities, schools, businesses and individuals to enhance that sense of belonging to a special place.



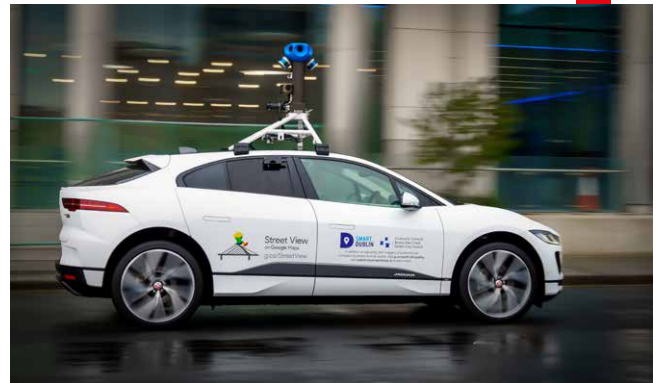
## DUBLIN CITY COUNCIL

### Project Air View



Dublin City Council in partnership with Google, launched the Project Air View initiative which measured local street level air quality for the first time in Ireland. Over a span of 16 months, an electric Street View Car equipped with advanced sensors meticulously captured over 50 million measurements of air quality across the streets of Dublin city, providing valuable insights into a range of pollutants known to adversely affect community health.

The air pollution measurements were used to develop maps of street-level air pollution. This big data and citywide air quality maps are made openly available at Google Environments Explorer and Dublin's Open Data Platform, Dublinked to support policy development, future research, advocacy & awareness around air quality for a sustainable environment.





# SUSTAINABLE ENVIRONMENT & BIODIVERSITY

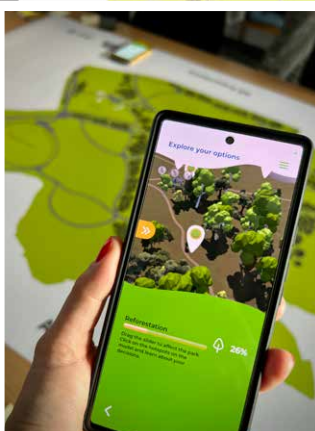


## DÚN LAOGHAIRE-RATHDOWN COUNTY COUNCIL

### Fernhill Park and Gardens AR Experience



Fernhill Park Experience is an educational augmented reality (AR) game centered around Fernhill Park and Gardens in Stepaside, Dublin. Developed in collaboration with IADT’s Public Design Lab and Noho Creative Design, the project was funded by Science Foundation Ireland (SFI) under the Discover Programme and is a partnership between Dún Laoghaire Rathdown County Council and Dún Laoghaire Institute of Art, Design, and Technology.



Using AR technology, the app presents a three-dimensional model of Fernhill that users can interact with. It overlays virtual objects onto the real-world environment, allowing players to explore Fernhill while gaining knowledge about rewilding, reforestation, and renewable energy. Acting as the ‘Parks Superintendent,’ players can make real-time modifications to the park, such as increasing forestation or reducing renewable energy generation. Ultimately, they select a final scenario for Fernhill and discover the consequences of their decisions by viewing a futuristic representation of the park in fifty years.

## KILDARE COUNTY COUNCIL

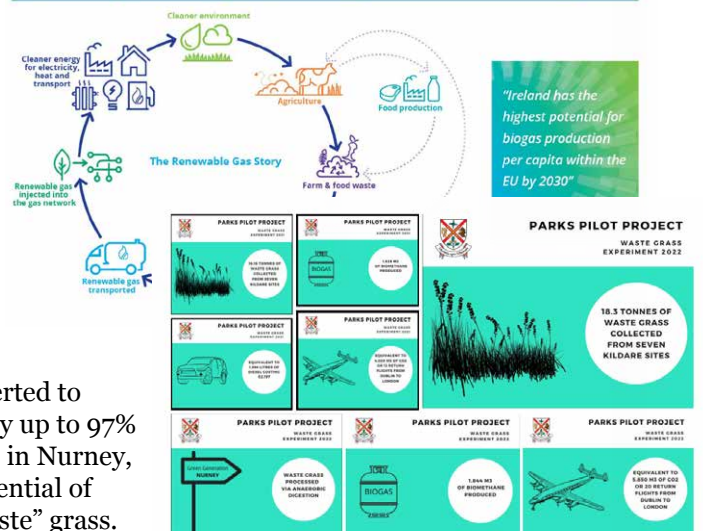
### Grass to Gas - Sustainable open space management through fuel generation



While seeking methods to reduce herbicide usage in the maintenance of public spaces along with revised grass cutting schedules to protect biodiversity the question arose - What can be done with the waste grass? Grass on public lands can be contaminated (e.g. dog fouling, litter) and conventional uses don’t apply. Grass contains sugar, sugar is a form of energy. To quote Einstein “Energy can neither be created nor destroyed; rather, it can only be transformed or transferred from one form to another.” What if that energy could be converted to another usable form while protecting biodiversity and reducing our greenhouse gas emissions?

Using the circular economy model the waste grass is converted to biogas via anaerobic digestion reducing carbon emission by up to 97% as per the experiments undertaken with Green Generation in Nurney, Co. Kildare. Further research will ascertain the energy potential of our public lands including vehicles we could fuel from “waste” grass.

#### Renewable gas - turning waste to energy



# SUSTAINABLE ENVIRONMENT & BIODIVERSITY

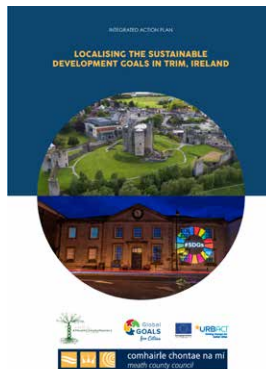


## MEATH COUNTY COUNCIL

### URBACT - Global Goals for Cities



Global Goals for Cities, in short GG4C, is a pilot network proposed and funded by URBACT III in partnership with the Council of European Municipalities and Regions (CEMR) to support cities in the process of localising the UN 2030 Agenda and the Sustainable Development Goals (SDGs) in their respective local contexts.



This project was undertaken by forming a group of local community representatives from Trim Town (known as the URBACT Local Group) to co-develop an Integrated Action Plan with Meath County Council. This group in collaboration with Meath County Council identified actions to localise sustainable development goals with Trim Town.



## MONAGHAN COUNTY COUNCIL

### Magic Under Monaghan



Magic under Monaghan: a youth short film links peatlands heritage to climate action. Shot on Sliabh Beagh, Monaghan's sole blanket bog, showcasing its vital role in planetary health. Peatland restoration, a potent nature-based climate solution.

The show was presented by RTÉ schools hub host, John Sharpson, with animated characters Pete and Fen for an informative, entertaining experience.



## SOUTH DUBLIN COUNTY COUNCIL

### Dublin Urban Rivers LIFE project



The Dublin Urban Rivers LIFE (DURL) project is a collaboration between South Dublin County Council, Dún Laoghaire-Rathdown County Council and the EU LIFE Programme. South Dublin County Council is the project lead and stakeholders can keep track of the project at [www.dublinriverlife.ie](http://www.dublinriverlife.ie).

The project seeks to improve water quality in County Dublin and promote water quality improvement in urban areas in Ireland and Europe by developing multiple options to address water pollution from domestic misconnections - using a GIS-based source removal approach or treat polluted stormwater using integrated constructed wetlands (ICWs) as a nature-based solution.

The DURL project built three integrated constructed wetlands in South Dublin County in 2023, with a fourth as part of the Poddle Flood Alleviation Scheme, and a fifth under site appraisal. These natural water retention measures will improve stormwater quality before discharging to local rivers, improve biodiversity and green infrastructure in public parks.



# COMMUNICATIONS



## CORK CITY COUNCIL

### 'Pathways to Participation' - Attracting and Sustaining Women as Leaders in Communities, Politics and Business



Up to 350 members of the public gathered with Oireachtas, community and NGO representatives; representatives of the business, education and sporting communities; and other partner agencies at an eagerly-awaited conference at Cork City Hall entitled 'Pathways to Participation' - Attracting and Sustaining Women as Leaders in Communities, Politics and Business'.

Central to the communications strategy of this event was ensuring quality of speaker – it needed to ensure participants were authentic voices that people of ages and backgrounds 'would scramble to hear' and that would educate, motivate and inspire.

Furthermore, speakers with a strong media and social media presence were strategically sought out as they could leverage their communications platforms to rally attendance.

For example, the MC of the event was award-winning screen writer, podcaster and social media activist, Stefanie Preissner - champion for neurodiversity, mental health awareness and greater political participation.

## FINGAL COUNTY COUNCIL

### 3D/Virtual Reality Models of Public Realm Projects



The rendering of the towns of Swords and Balbriggan in 3D provides the Council with an effective communications tool to illustrate public building/ public realm projects to the public. The simulation of the digital twin town allows people to relate the digital model, in virtual reality by means of a VR headset they can control, to what they know exists in their town and to experience and explore the new building project as it sits in the digital landscape.

This means of communication allows people to easily interpret plans, elevations and sections of building plans which can often be difficult to understand on 2D drawings if you are not a professional. Allowing the public to better understand the building plans allows them an opportunity to provide more valuable feedback and submit better thought-out observations on plans, ensuring an effective feedback mechanism to the Council.





NETWORKS



KILDARE COUNTY COUNCIL

# Get Kconnected, Stay Connected: Internal Communications Campaign



Get Kconnected, Stay Connected was an internal communications campaign to introduce an effective communications platform to engage and inform staff across the organisation, particularly outdoor staff without access to email or Council intranet.



The project included the development and introduction of a bespoke staff app containing real-time important information and updates, as well as additional engaging resources. The app was developed to become a vital source of information to ensure staff have an understanding of the work and role of Kildare County Council, breaking news & updates, and most importantly, receive this information first-hand, directly from the organisation.



The 3 campaign phases: Phase 1: Content Research & Development; Phase 2: Launch; Phase 3: Building & Maintaining

Staff engagement was at the centre of this campaign. Having identified a communications gap, particularly with outdoor staff who don't have access to existing communications channels, a solution was sought which would be accessible for everyone.

LAOIS COUNTY COUNCIL

# MidlandsIreland.ie: A Digital Roadmap to Promote the Midlands region



MidlandsIreland is a digital roadmap for promoting the Midlands region. The goal of the initiative is to raise awareness and change perception of the Midlands at regional, national and international level, promoting the region as a vibrant destination for investing, living, working, learning and enjoying. The initiative is led by Laois County Council as a shared service between the local authorities of Laois, Longford, Offaly and Westmeath under the auspices Midlands Regional Enterprise Plan supported by National Just Transition Fund.

Key undertakings in the initiative included the appointment of a communications team, development of a new brand identity and website for the region [www.midlandsireland.ie](http://www.midlandsireland.ie), development of a launch video, and the implementation of a performance marketing plan across a variety of digital platforms. Since launch, the project has seen content reach of over 6.1 million, as well as close to 300,000 content engagements.



# COMMUNICATIONS



## LIMERICK CITY & COUNTY COUNCIL

### Limerick Student City



There's no place like Limerick for college life, a vibrant riverside city with internationally-rated academic institutions offering student-centric, future-focused undergraduate to post-doctoral studies, with an eye on employability.

Limerick is home to no fewer than ten Tertiary Education Institutes, including the University of Limerick, Mary Immaculate College, Technological University of the Shannon: Midlands Midwest and Limerick School of Art & Design. It has a third level student population of almost 25,000 students.

The Marketing and Communications team promotes activities, events and services in Limerick to existing students, whilst also positioning Limerick as a leading university city to potential students considering it as a third level study destination.



## LONGFORD COUNTY COUNCIL

### Dog Rehoming Campaign



The campaign encourages the rehoming of dogs from the Longford Dog Pound through the use of social media posts, easier application process and new webpage on the Longford County Council website. The numbers of dogs being cared for in the Longford Dog Pound grew considerably during and following the Covid-19 pandemic lockdowns, resulting in many dogs being surrendered.

Information was posted on Longford County Council social channels and on the Longford County Council website.







NETWORKS

# COMMUNICATIONS

## WATERFORD CITY AND COUNTY COUNCIL

### #CelebrateWaterford - Ireland's Best Place to Live

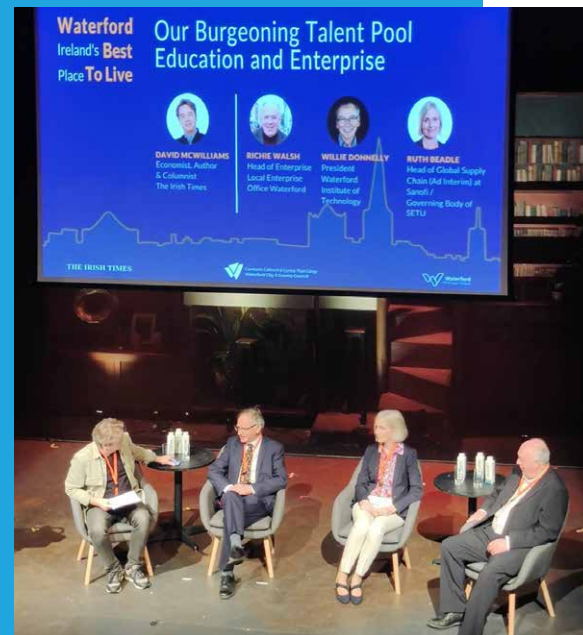


When The Irish Times launched its search for the Best Place to Live in Ireland, Waterford City emerged as the overall winner from 2,400 entries for 470 locations.

Being recognised as the Irish Times Best Place to Live in Ireland was a wonderful endorsement of Waterford as a great place, with strong community ties, a rich arts and culture scene, and a bright future.

Waterford was judged on broad criteria including natural amenities, buildings, community initiatives and spirit, presence of clubs and societies, good local services, transport links, employment opportunities, diversity, the price of property and housing supply, and cost of living.

Once COVID-19 restrictions were lifted and gatherings and events were permitted, Waterford City and County Council went about formulating a multi-faceted campaign that showcased Waterford's latest accolade, including PR, a social media campaign, national radio campaign, outdoor signage and two innovative events highlighting the accolade.



# CLIMATE CHANGE



## CORK CITY COUNCIL

### LED Lantern Upgrade & Energy Efficiency Project



Due to the large cost increase in energy expected as a result of the renewed metered and unmetered contracts due for retendering in 2022 and 2024 respectively, Cork City Council’s public lighting department proactively sought out ways to reduce energy consumption. This was done through LED lantern upgrades, using better dimming profiles/photocell and smart lighting control systems.



The public lighting maintenance contract incorporated rates for design and install of upgraded schemes by the maintenance contractor ensuring the Local Authority got value for money. Keeping this in house ensured efficiency in term of design, procurement and length of time it took to install lanterns.

Cork City Council were able to upgrade over 80 estates in the first 23 months of the project, which led to the installation of 4,821 new LED lanterns (approx. 20% on inventory). This will give an estimated annual saving of 1,422 MWhrs and 774 CO2(t).

## KILDARE COUNTY COUNCIL

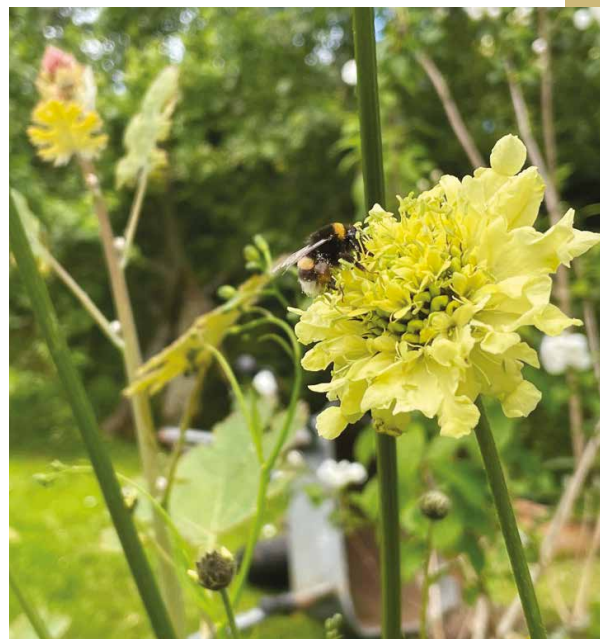
### Local Authority Climate Action Training Programme



Combating climate change is one of the world’s greatest challenges. Ireland has committed to take the necessary action to reduce its greenhouse gas emissions and increase resilience to the current and projected future impacts of climate change. The Climate Action and Low Carbon Development (Amendment) Act 2021 requires the country to achieve the National Climate Objective of transitioning to a Climate Resilient, Environmentally Sustainable, Biodiversity Rich and Carbon Neutral Economy by the end of 2050.

Towards achieving effective climate action, the local government sector in particular is identified as having an important Leadership Role as a key mobiliser of climate action at local and community levels.

This Local Authority Climate Action Training Programme is a culmination of efforts from a range of contributors, managed by the CAROs and supported by the Department of the Environment, Climate and Communications to further build capacity to deliver on ambitious climate action targets.





# CLIMATE CHANGE

## LIMERICK CITY & COUNTY COUNCIL

### Limerick's First School Street - An Mhodhscoil



An Mhodhscoil is a city school in Limerick that caters for over 600 pupils. The initiative, just the second of its kind in Ireland, ensured Roden Street, where the school is located, became a 'School Street' during school hours.

Motor vehicles (outside of residents, creche buses and staff) cannot enter the street between the hours of 8am-9am and 1.15pm-2.45pm. Footpaths were widened by the Active Travel Team, while pencil shaped bollards were erected near the school. A crossing at the front of the school was improved to provide a shorter crossing distance, with extra planting and a 'rain garden' also supplied.

A key pillar of the initiative is to ensure car reduction within school hours, leading to a greater use of 'park and stride' facilities near the school. A new crossing on the adjacent Quin Street is also in place to ensure pedestrians are prioritised in the area.



## MEATH COUNTY COUNCIL

### Trim Air Quality Project



The Trim Air Quality Project looks to monitor the air quality in two locations in the town of Trim. It will provide an online dashboard, which the public can view to look at the air quality.

As air quality is currently recorded at a macro scale around Ireland, the benefit of this project is the analysis of air quality at a micro scale. At this level it is much easier to get engagement from local people and help them understand why certain changes are needed and the benefit they will provide.

One challenge in gaining local support for climate change projects and initiatives is that many people don't perceive it as a local issue. They often believe it's something happening far away and feel disconnected from it. This project emphasises that climate change is indeed a local issue.



# CLIMATE CHANGE



## SOUTH DUBLIN COUNTY COUNCIL

### Tallaght District-Heating Network



Space heating accounts for almost 40% of carbon generated annually in Ireland. District-heating offers a technology-neutral platform which can combine waste-heat, renewable energy sources and co-generation with smart, flexible energy-systems into a low carbon, low-cost solution for urban neighbourhoods.



As a significant step towards a low carbon economy, SDCC committed to overcoming financial, regulatory, and organisational barriers and delivering a functioning district-heating network. SDCC negotiated the supply of 10 MW of waste-recyclable heat from a large datacentre developed by Amazon Data-services Ireland in Tallaght town-centre. (Heat is provided at no cost by Amazon as part of their zero-carbon commitment).

The DH scheme required the formation of a publicly owned heat-utility company, a customer-base, sufficient developmental grant-aid, procurement of an experienced energy-supply company, and a suite of innovative contracts not available hitherto in Ireland. Construction of the energy centre and pipe-network was completed at Q1 2023 and the system is now fully operational.

## WATERFORD CITY AND COUNTY COUNCIL

### Business Rates Waiver to promote and support sustainability



In Waterford, businesses account for 37% of emissions, the majority of those coming from energy use.

In 2022 almost 1,000 businesses across Waterford took advantage of the Rates Energy Discount Scheme. They completed online training on energy efficiency and received information on how to save energy and source funding for sustainability projects in their business.

The Rates Energy Discount Scheme was introduced to encourage businesses to play their part in reducing carbon emissions, joining householders, the local authority and many more in the county. In return for completing the programme, businesses received a discount of 5% on their rates. This Scheme continues in 2023 with businesses being eligible to an 8% discount if they complete an energy audit.

As a result, businesses are doing their part to reduce carbon emissions, reduce fuel and save money.





# SUSTAINING THE ARTS



## CARLOW COUNTY COUNCIL

### Borris Lace By Post and Exchange



Inspired by the traditional craft of Borris Lace, The Borris Lace by Post Project and Exchange, it is a long term project. The aim of the project was to engage communities in a creative way in a Covid safe way.

Participants were engaged in a process of making and stitching with two artists, Ally Nolan, a designer and craft maker and Jules Michael a community artist, both artists are reputable in their field of practice and are from County Carlow.

Jules and Ally designed an initial six-month project where participants received a pack by post filled with everything involved in making lace, sewing techniques, drawing and more. The reach of the project created a dialogue between this indigenous craft and contemporary art, it reached Nursing Homes, Active Retirement Groups, Local Schools and Mens Sheds, it is a longer-term project that also has created a European Exchange with our partners in Italy.



## CORK CITY COUNCIL

### The KinShip Project



To the south of Cork city, near the famous Nemo Rangers GAA Club, sits Tramore Valley Park, the site of The KinShip Project. Established by Cork City Council with artists Lennon and Taylor (Marilyn Lennon and Sean Taylor) who conceived the project, it is supported by local project partners Cork Nature Network, Cork Healthy Cities, Cork UNESCO Learning City, Green Spaces for Health, Munster Technical University (MTU) Clean Technology Centre and University College Cork (UCC) Environmental Research Institute.

With the support Creative Climate Action funding from Creative Ireland, in 2021 and 2022 it manifested as a socially engaged arts programme of citizen-led skill swaps and knowledge exchanges, artist's placements, The KinShip EcoLab architectural commission and creative interventions in the park. Combined, these elements have engaged local people to inform and enjoy a programme of accessible, inclusive, creative and fun events.



# SUSTAINING THE ARTS



DÚN LAOGHAIRE-RATHDOWN COUNTY COUNCIL

## Framing the Senses



Framing the Senses' was a programme for and with people living with dementia in Dún Laoghaire-Rathdown County. It benefited people living with dementia, their carers and created an awareness among the general population about the positive impacts of creativity for people living with dementia.

Highlights of the programme were:



A dementia inclusive art exhibition with a specially commissioned multisensory art installation and a series of dementia inclusive activities. A talk series exploring dementia and creativity with the Global Brain Health Institute. A programme of multisensory activities in residential care settings bringing arts-based multisensory activities directly to those unable to travel from their care setting. Activities for carers of people living with dementia in local libraries.

The programme was informed by people living with dementia and their carers. It explored creative ways to engage people at different stages of their dementia journey. It had a wide ranging impact for all involved.

LIMERICK CITY & COUNTY COUNCIL

## Decarbonising Together



Decarbonising Together invited five communities from the Limerick Metropolitan area to examine how meaningful climate action can become part of their day-to-day lives. Each group explored an aspect of Decarbonisation through a creative collaboration with arts and creative industry partners resulting in five creative outputs. The project focused on making and doing together to enable behaviour change towards decarbonisation in Limerick.

The five projects were;

- 1 Grounds for Change
2. Decarbonising Together Garryowen
3. Ministry of the Imagination
4. ,Meadowbrook
5. The Orchard Project, Film Project



Decarbonising Together was a joint cross Directorate collaborative project between Limerick City and County Council, Urban Innovation Department (Project Management and implementation) and the Arts Office. Delivery was through the Citizen Innovation Lab and supported by Limerick City and County Council, University of Limerick Department of Economics and School of Architecture/Fab Lab Limerick, Colaborativa.eu and Space Engagers.



# SUSTAINING THE ARTS

## MEATH COUNTY COUNCIL

### Supporting Creative Engagement in Older Age



Age Friendly Ireland developed six bespoke regional creative initiatives for older people which were rolled out with funding from the Creative Ireland Programme in 2022. The initiatives were co-designed with Older People’s Councils and responded to specific themes that were identified for each region.

The context for this collaborative work was a response to findings from research by the Irish Longitudinal Study on Ageing [TILDA] which underscored the positive impact of creative activity on older people’s health and wellbeing.

Creative partners were identified through a public call to support delivery in each region. The creative activity delivered was wide ranging from ceili dancing, song writing, learning an instrument, painting and clay work, poetry, flower arranging, drama, pageantry and film. These initiatives demonstrated how beneficial creative engagement is for older people and also highlighted the appetite and interest in creativity among the ageing demographic. Over 1,000 older people benefitted.

## SOUTH DUBLIN COUNTY COUNCIL

### Sightless Cinema Tallaght



Sightless Cinema by theatre-maker Ciarán Taylor, adapts theatre devising techniques for the collaborative creation of audio theatre with people with sight loss. Groups meet over 6 to 9 months to devise, perform and record plays.

It offers high quality collaboration opportunities, and professional production for public presentations at surround sound listening events in theatres and cinemas (IMC, Civic Theatre, Rua Red), which also include live performances.

Sightless cinema builds demand for disability arts provision and helps break down barriers to participation.

It is supported by South Dublin County in co-operation with the National Council for the Blind Ireland.



# HEALTH & WELLBEING



## CLARE COUNTY COUNCIL

### Promoting Health and Wellbeing across County Clare



A need to increase awareness of existing health and wellbeing activities in County Clare was identified at a Networking Meeting in Ennis during Mental Health Week, October 2022. As a result, Clare County Council’s Healthy Clare team developed and implemented a multi-faceted approach to raising awareness of national and local Health and Wellbeing initiatives, helping to ensure everyone in the county has access to knowledge that can help them improve their health and wellbeing.

Each action focuses on the six key themes of Healthy Ireland, the cross-governmental framework for improved Health and Wellbeing in Ireland. These six themes include mental health, physical activity, healthy eating, tobacco free, reducing drugs and alcohol-related harm, and sexual health.

Actions by Healthy Clare to raise awareness in County Clare included a Healthy Clare Calendar, a Health and Wellbeing page in the Clare Echo, and a monthly newsletter.

## DÚN LAOGHAIRE-RATHDOWN COUNTY COUNCIL

### Inclusive Cycling For All



Following a collaboration between Dún Laoghaire Rathdown County Council, Dún Laoghaire Rathdown Sports Partnership, The Bike Hub, and Cycling Without Age, older adults and people with a disability can now book for free a range of inclusive bikes to cycle along the Coastal Mobility Route in Dún Laoghaire.

This new inclusive fleet includes two electric trishaws which are designed to carry one or two people at the front. Older adults and people with limited mobility now have the opportunity to go on a cycle at an easy pace, taking in the sights and sounds of the coastline, whatever the weather.

This fleet also has a range of other bikes including a wheelchair bike, tandem bike, handcycle and specialised trikes for hire by children or adults with a disability. The bikes are located at and hired for free from The Bike Hub in Dún Laoghaire through an online booking portal.







# HEALTH & WELLBEING

## KILDARE COUNTY COUNCIL

### Kildare Sports Ability Day 2022



Kildare Sports Ability Day 2022 was an event to showcase the various physical activities and sporting opportunities available to children and adults with a disability in Co. Kildare. Twenty-one organisations across fourteen different sports, exhibited their activities through a variety of ‘Come and Try’ sessions, demonstrations, and information stands. These organisations included local clubs, National Governing Bodies (NGB’s) of sport, and disability-specific NGBs.

Hosted in NUI Maynooth on November 12<sup>th</sup>, this was an all-inclusive event which catered to people with intellectual, physical, and sensory disabilities. The wide variety of sports covered on the day included Badminton, Boccia, Boxing, GAA, Golf, Rugby, Soccer, Tennis and much more.

Guest appearances on the day included international champion boxer Eric Donovan and the official Leinster rugby mascots Leo & Leona the Lion.

AccessoLoo supported the event by providing portable bathroom/ changing facilities, while a sensory room was available for participants on the day if needed.



## LIMERICK CITY & COUNTY COUNCIL

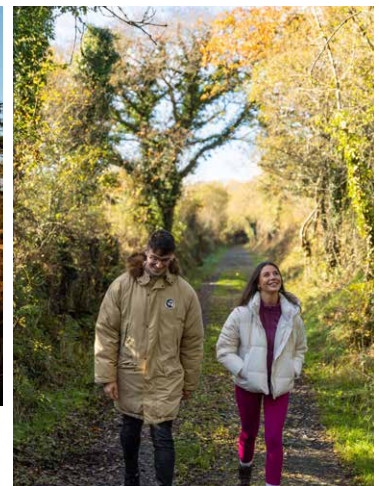
### Limerick on Foot



The #LimerickOnFoot campaign was launched on 20 January 2023, and focused on encouraging people to get outdoors and explore the tracks and trails throughout Limerick City and County.

Having received funding from the Department of Rural and Community Development, Failte Ireland and Limerick City and County Council under the Outdoor Recreation Infrastructure Scheme, the campaign promoted specific County Limerick trails.

The campaign centred around three key routes: Kilmoylan Woods Nature Walk, Liskennett Forest Trail, and the Galtymore.



# HEALTH & WELLBEING



## SOUTH DUBLIN COUNTY COUNCIL

### Teenspace Programme



South Dublin County Council’s Teenspace Programme is based on the response to an online conversation with teenagers, to find out what their needs are and how they can be best met in South Dublin’s Public Realm. The results of the programme pointed to a need for safe, pleasant places for young people to meet with friends and engage in a range of unstructured physical activities.



The programme showed that physical and mental well-being of teenagers is greatly enhanced by access to the outdoors, social contact and physical activity. South Dublin’s Teenspace programme is directly focussed on meeting these needs.

## WEXFORD COUNTY COUNCIL

### Experiencing Success The Rag Tree project



‘Experiencing Success The Rag Tree project’ is a partnership between Rag Tree Equine Assisted Learning, Sports Active Wexford (local sports partnership based in the local authority), Waterford Wexford Education and Training Board (WWETB), Wexford County Council, Healthy Ireland, CYPSC and Occupational Therapy (OT) in HSE Mental Health Services.

Teenagers who are out of school completely, on reduced timetables or in receipt of home tuition, were invited to attend the programme. Based on the positive outcomes of the pilot equine therapy programme in 2021 during Covid pandemic measures Wexford County Council developed the project to offer a longer-term outcomes-based programme. The programme was targeted at improving the well-being and experiences of these young people who had been negatively impacted by the Covid Pandemic. Alongside this, Wexford County Council offered the WWETB QQi level 4 qualifications, to support the girls’ educational journey.





# HEALTH & WELLBEING



## WICKLOW COUNTY COUNCIL

### Hidden Disabilities Sunflower Initiative in County Wicklow



In April 2023, Wicklow County became the first County Council in Ireland to recognise the Hidden Disabilities Sunflower across all of its public offices and libraries. The lanyard is intended to alert Council employees that the person wearing it has a hidden disability and may need extra assistance with whatever they want to do.

People with non-visible disabilities living in or visiting County Wicklow can collect a Sunflower Lanyard free of charge from any of the public offices or libraries.

The Hidden Disabilities Sunflower is a simple tool for anyone to voluntarily share that they have a disability or condition that may not be immediately apparent and that they may need a helping hand, understanding, or more time in shops, at work, on transport, or in public spaces.



# MUNICIPAL DISTRICT INITIATIVE



## CLARE COUNTY COUNCIL

### The Shannon Embankment Scenic Trail



The Shannon Embankment Scenic Trail is a 3 km of 7.5km looped accessible route that runs along the southern side of the Shannon estuary in Shannon Town. The views are truly breath taking and incorporates a forest area as well as the stunning Estuary views which is a special area of conservation. This is a true gem in that its location is one of the most important sites in Ireland for over-wintering wildfowl and waders.



Hastings Cottage which is a local archaeological heritage site is located near the start of the route and is in the process of being restored and will form a further attraction for users of the trail. Both the walkway & old historical cottage are being enhanced with care in order to avoid any ecological destruction.

The Council will ensure that this precious Estuary amenity is preserved to be experienced and enjoyed by all including future generations.

## CORK CITY COUNCIL

### Cork City to Passage West Greenway Phase 1



The Cork City to Passage West Greenway Phase 1 from Pairc Ui Chaoimh to Mahon involved providing 3km of a wider, safer greenway, access ramps, public lighting and over 2,000 new trees alongside conservation works to Blackrock Station and the many bridges along the route. These bridges represent some of the finest examples of cut-stone bridges in the State.

The existing greenway traces the route of the 19<sup>th</sup> century Cork, Blackrock and Passage Railway line. Much of the railway features including stations, bridges, railings and masonry walls had been allowed to fall into disrepair since the railway line closed in 1932. Cork City Council working together with designers Clifton Scannell Emerson, Landscape Architects Mitchel Associates, JCA Conservation Architects and a variety of skilled craftspeople employed by the main contractor Ward and Burke have carried out conservation works which has repaired and protects this heritage for appreciation by the general public.





# MUNICIPAL DISTRICT INITIATIVE



KILDARE COUNTY COUNCIL

## Wellbeing roadshow



The Wellbeing roadshow by the Kildare County Council was a targeted county-wide event hosted in the Kildare/ Newbridge MD. The roadshow took place in the Kilcullen Mart on Tuesday Feb 7<sup>th</sup>. They have partnered with Kildare West Wicklow IFA to bring a community roadshow targeting isolated Farmers in Kildare. They made a deliberate decision to hold the event in a local mart to reduce barriers to participation and to ensure a sense of belonging on the day

They had over 25 information stands from various agencies and services including farmer related services and supports.

They had information on:

- Health and Wellbeing
- Rightsizing/age friendly homes
- Education and Employment
- Mobility and Balance
- Safety and Security

They also introduced new Fitsticks for Farmers programme and had Minister Heydon in attendance and Ceann Comhairle speak on his journey with prostate cancer.



KILDARE COUNTY COUNCIL

## Newbridge Womens shed



The Newbridge women's shed was set up for women of all ages and backgrounds to re-connect with themselves and the wider community.

Above all the shed is to be a safe space where women are empowered through peer education and friendships.

The aim is to improve Mental Health and wellbeing by increasing social inclusion and creating conditions for diversity to flourish.



# MUNICIPAL DISTRICT INITIATIVE



## LIMERICK CITY & COUNTY COUNCIL

### Regeneration Community Jobs Fair



By hosting Jobs fairs in the heart of the communities, Limerick City and Council engaged in a process of positively disrupting engrained attitudes and enabling residents to engage directly with the employers.

The Jobs Fair is a unique joint initiative of the local authority, LCETB, TUS, Community, and Industry representatives to address the pockets of unemployment that are prevalent in the four regeneration communities in Limerick.



An objective of Limerick City & County Council Regeneration Directorate is to engage and empower areas where there are historically high levels of unemployment. Attitudes towards employment in these areas have been informed by negative inter-generational experiences of residents. Anecdotally, residents from these areas have experienced prejudicial attitudes from employers in the past and this has resulted in a generational fear of engaging with employment opportunities.



# URBAN REVIVAL



## CLARE COUNTY COUNCIL

### Life after Landfill - Ennis Mens Shed Community Initiative



This initiative involved breathing new life into a former landfill site at Doora Ennis, Co. Clare. The abandoned landfill has now been revitalised into a vibrant and thriving community recreational facility. It is currently home to the Ennis Men’s Shed and Clare Camogie. Doora landfill began operation in 1956 and closed in 2001. The facility occupies about 29.8 hectares of land, situated next to the Fergus River and Ennis town.



The repurposing of the site began in 2011, Clare Camogie received the go ahead from the Clare County Council to develop a full-size playing pitch and training pitch, a dressing room and car park to accommodate 62 cars.

In 2021, a section of the lands was developed into a community facility for the Ennis Men’s Shed. The facility has a dedicated social and recreation area, a large state-of-the-art workshop, along with a community garden and a woodland walkway.

## CORK CITY COUNCIL

### Springville House ‘Rightsizing’



As part of its ‘Rebuilding Ireland’, 2017-2019 housing initiatives, Cork City Council identified an opportunity to redevelop Springville House, Blackrock. This would help reset the city sustainably while also addressing the urgent requirement for ‘right-sizing’, and over 60 accommodation due to its location.

The innovation in this opportunity was the vision to achieve conversion of an outdated third generation building into a modern 35-unit apartment block suitable for the ‘right sizing’, demographic, all designed in line with best practice and standards. An example of urban revitalisation, it provides sustainable communities and urban fabric while counteracting dereliction.

Given its proximity to the city centre, retail, recreational, and healthcare facilities, including walkways, this residential development delivered in 2022 is a shining example of what can be done by collaboration and conversion.



# URBAN REVIVAL



## KERRY COUNTY COUNCIL

### Positioning Tralee as a Regional Economic Driver and Destination Town



The long-term vision for Tralee is to enhance its position as a driver of County and Regional prosperity through a regeneration programme that creates a quality, vibrant and attractive urban centre. A ‘Destination Town’ that is competitive nationally and internationally in attracting investment, talent, enterprise and visitors.

Kerry County Council is seeking to regenerate Tralee as a regional economic driver through boosting the supply of high-quality employment spaces, residential opportunities and the development of an excellent quality environment, by means of strategic investment in office development, public realm improvements, residential, leisure and amenity areas.

The vision recognises the need to strengthen Tralee’s sense of place and identity through the enhancement of the town centre by the development of a well-connected, high-quality network of streets and spaces for all users, through the animation of its heritage and the development of strong linkages to the surrounding coastal landscape.

## KILDARE COUNTY COUNCIL

### Kildare’s Public Parklets



The Strategic Projects and Public Realm team (SPPR) in Kildare County Council (KCC) designed and progressed the installation of public parklets in several towns in County Kildare (namely Celbridge, Leixlip and Naas). A variety of designs were developed (both by external consultants and in-house in KCC by SPPR) ranging from low-cost, quick to install interventions to more permanent fixtures. The public parklets were designed to be fully accessible and inclusive, providing outdoor public spaces with seating (including wheelchair accessible tables) and planters (with pollinator friendly planting) and typically took the place of 2 no. on-street carparking spaces (with the exception of the Leixlip parklet supplied by ‘publicspaces’ which took the space of 1 no. carparking bay).

The public parklets proved to be a success during Covid-19, delivering inclusive and safe spaces for all to socialise and provided the community greater opportunities to engage with, support and enjoy their town centres.







# URBAN REVIVAL

## SOUTH DUBLIN COUNTY COUNCIL

### The Street; Kick starting the Tallaght Innovation Quarter

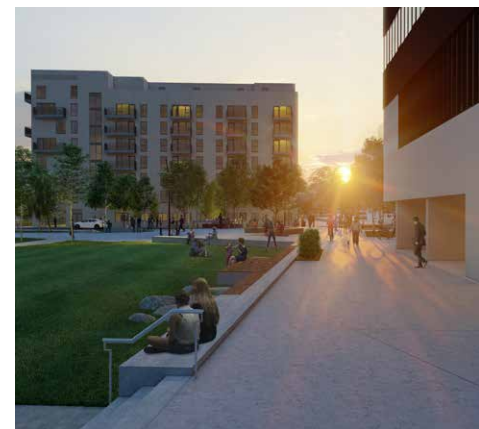


Tallaght Innovation Quarter (IQ) is South Dublin’s ambitious plan to propel Tallaght’s next phase of growth. This initiative encompasses interventions to enhance both physical and social connections and to revitalize underused brownfield lands in the area.

At the heart of Tallaght IQ lies ‘The Street’ – a 3.5km long project to be executed in seven phases. This safe, well-marked route will seamlessly link present and future communities with the Town Centre, while also unlocking previously inaccessible Council-owned sites for development.

The Council’s commitment extends beyond The Street, with an array of projects aimed at meeting community needs, fostering a lively atmosphere, and instilling confidence in both communities and private landowners.

The Tallaght IQ program encompasses a wide range of initiatives, including cost-effective rental and elderly homes, a secondary school, a dedicated workspace building, the addition of a fourth stand to Tallaght Stadium, local sports pitches, upgrades to the Tallaght library, establishment of a heritage centre, an extensive program of cultural events, and the implementation of an energy network.



## WATERFORD CITY AND COUNTY COUNCIL

### Tramore Town Centre Public Realm Works



The Tramore Town Centre Public Realm Works, seeks to regenerate the town centre.”

A reclaimed pedestrian area has been completed in what was the original crossroads of the old town. Stepped seating is worked into the challenging topography of the site to allow a levelled pop-up performance and outdoor seating area.

The solid stone paving pattern in Kilkenny limestone and Portuguese sand coloured granite echoes wave like motions descending the steep hill of Main Street and will connect in the future with the sea front. The grey lines pop up in places to form the stone seating. This small insertion of quality public realm has managed to, breathe new life into the area. There is a thriving bakery, restaurant, and coffee shops.

There are also future plans to continue the concept down the hill to the waters edge.



# URBAN REVIVAL



## WEXFORD COUNTY COUNCIL

### The High Hill Norman Gardens



New Ross is a town steeped in Norman heritage. The High Hill was once the centre of the thriving medieval town and the site of medieval buildings, and subsequently the Tottenham Townhouse which became the Royal Hotel.

The hotel fell into dilapidation, suffered serious fire damage, and was demolished in 2010 leaving a large derelict urban site, privately owned, which had become an area of antisocial behaviour and littering.

Wexford County Council acquired the site and developed an ambitious plan for its regeneration. The proposal was to enhance the visual quality of the site and the journey from the quays to St Mary’s Norman Church, part of the Norman Way. Also, the creation of an attractive garden was planned, to promote tourism and boost economic activity, with a landscape telling the story of New Ross’s Norman history including the lives of the town’s founders, William Marshal and Isabel de Clare.

**CORK CITY COUNCIL**

**Elizabeth Fort -  
Outdoor Public Spaces Scheme**



Elizabeth Fort, a 17<sup>th</sup> Century stone bastioned fortification was selected for the Outdoor Public Spaces Scheme by County Cork Council. The fort is a national monument and a protected structure.

The main challenge was to adapt and improve the outdoor space as an arts and cultural venue without compromising its current use as an important visitor attraction and heritage asset. A sensitive approach was required whereby a timber-framed outdoor stage was proposed. A removable waterproof covering was also designed to accommodate year-round performances.

The existing poor quality tarmacked / concrete parade ground was replaced with an attractive self-compacting fine golden gravel with incorporated recessed Kilkenny Limestone setts. A timber retrofit seating was installed to the perimeter of the main public space and an alternative escape route was installed to the Fort's rear, via an existing bricked-up exit to provide for larger audience capacities. Finally, electrical infrastructure upgrades were made to accommodate flexible events.



**DÚN LAOGHAIRE-RATHDOWN COUNTY COUNCIL**

**Dublin Mountains  
Community Archaeology**



The Dublin Mountains Community Archaeology (DMCA) initiative is a partnership project involving Dún Laoghaire-Rathdown County Council, South Dublin County Council, the Dublin Mountains Partnership (DMP), and the Heritage Council.

It is a response to specific archaeological heritage, tourism, and recreational objectives included in each Local Authority's Heritage Plan and Tourism Strategy, and to objectives in the DMP Strategic Plan. DMCA has operated since 2021, with the aim of raising awareness of the substantial archaeological record across the Dublin Mountains and to build a better appreciation of this lesser-known heritage resource on the doorstep of the capital city.

Public outreach activities have been undertaken and educational resources have been prepared to improve the accessibility of the uplands archaeological story to a wider range of interest groups. Liaising with key recreational user groups to promote better ways to engage with these archaeological features is an important element of the project.



# HERITAGE AND BUILT ENVIRONMENT

HOUSE OF  
**WATERFORD**  
IRELAND 1783



## FINGAL COUNTY COUNCIL

### Restoration of the Great Hall, Malahide Castle



Dating back to 1475, the Great Hall was the hub of the medieval Castle in Malahide. Throughout history, the Great Hall would have held feasts and banquets for Lords and dignitaries. Surviving The Battle of the Boyne and penal laws, today, it is a rare example of a Gaelic feasting room.

The extensive conservation works undertaken by Fingal County Council has restored this hall to its former glory. Works undertaken included: restoring the 19<sup>th</sup> century windows and the Minstrel’s Gallery, significant roof works, and full rewiring and installation of the heat control system. Extensive conservation of paintings within the hall was also undertaken by the NGI, with the artworks being re-hung in their original positions.

These paintings include portraits of the Talbot family who would have resided in Malahide Castle and this collection is considered one of the most important collections of Jacobite art displayed in their original setting.



## GALWAY COUNTY COUNCIL

### Digitising Galway’s Graveyard Heritage



Galway County Council, working with various community groups and archaeological consultants, has been collecting graveyard memorial data for a number of years. Until recently this data has been collected through several methods, both paper-based and semi-digital.

In 2020 the Council’s Heritage and Geographical Information Systems (GIS) section carried out a review of the survey methodology with the objectives of streamlining, standardising, and simplifying the survey process with the ultimate aim of generating a digital dataset that could be made freely available. In 2022 a project was initiated, supported by Heritage Council funding, to build and implement a cloud-based digital solution consisting of various innovative components. The solution is now successfully in place and to date over 25,000 memorials have been surveyed with the data available through a publicly accessible web-based application. In 2023 / 2024 another 15 graveyards will be surveyed and added to the system.





**KILDARE COUNTY COUNCIL**

**Reimagining the Potato Market in Naas**



Up to 2022, the Potato Market in Naas was an abandoned, vacant, overgrown and dangerous site in the historic heart of Naas which comprised of a number of derelict structures. In January 2022, Kildare County Council applied for funding under the Heritage Council’s Historic Towns Initiative ‘Resurrecting Naas Potato Market’.

Funding in the region of 217,000 Euro was awarded by the Heritage Council and Kildare County Council set about reinstating a community/market use in the historic town centre as a catalyst for regeneration and to accommodate the Naas Farmer’s Market. Over the space of 8 months the site was transformed into a home for a very vibrant weekly Farmer’s Market hosted every Saturday from 10am to 3pm.

The Naas Community responded positively to the initiative and the space has been used for a variety of cultural and performance events to date with more community events planned throughout 2023 and 2024.

**SOUTH DUBLIN COUNTY COUNCIL**

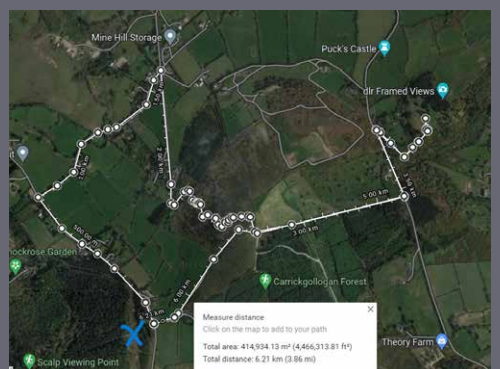
**Dublin Mountains Community Archaeology Initiative**



The ‘Dublin Mountains Community Archaeology’ (DCMA) initiative is a partnership project involving South Dublin County Council, Dún Laoghaire-Rathdown County Council, the Dublin Mountains Partnership (DMP), and the Heritage Council.

It is a response to specific archaeological heritage, tourism, and recreational objectives included in each Local Authority’s Heritage Plans and Tourism Strategies, and to objectives in the DMP Strategic Plan. DCMA has operated since 2021, with the aim of raising awareness of the substantial archaeological record across the Dublin Mountains and to build a better appreciation of this lesser known heritage resource on the doorstep of the capital city.

Public outreach activities have been undertaken and educational resources have been prepared to improve the accessibility of the uplands archaeological story for a wider range of interest groups. Liaising with key recreational user groups to promote better ways to engage with these important archaeological features is an important element of the project.



# HERITAGE AND BUILT ENVIRONMENT

# HOUSE OF WATERFORD

IRELAND 1783



WATERFORD CITY AND COUNTY COUNCIL

## Waterford's newest museums - Time and Silver



The Museum of Time and the Irish Silver Museum were opened in June 2021 by Waterford City and County Council and are a part of the Viking Triangle project in Waterford. They were launched to expand the offering in this area and encourage visitors to explore more of what Waterford had to offer.



The success of the idea was obvious in 2022 when thanks to the opening in June 2021 of the two new museums, visitor numbers reached 100,000 fee-paying visitors. This number was significant given the complications brought by Covid-19 to the tourism sector, as it was also far in excess of pre-Covid 19 figures for 2019. Over 50 % of the visitors were from overseas, with the vast majority from the US and the UK.

# AGE FRIENDLY INITIATIVE



## CORK CITY COUNCIL

### Cork Cultural Companions



Cork Cultural Companions, delivered by Cork County Federation of Muintir na Tíre, and supported by the HSE, Cork City Council and Cork County Council, creates local networks of like-minded people interested in arts and culture who can accompany each other to cultural events in and around Cork City and County.

Cork Cultural Companions aims to help address social isolation and loneliness amongst older people, aged 50+, by providing opportunities for peer support, encouragement and companionship amongst members while attending live events. Membership has grown rapidly and now exceeds 300, with between 10-15% attending events in person.

Cork Cultural Companions have collaborated with a number of arts organisations, venues and cultural centres, like Cork Opera House, Crawford Art Gallery, Triskel Cinema and many others to arrange discounts, special tours or other special arrangements for Cultural Companions Members.



## KILDARE COUNTY COUNCIL

### Celbridge as an age friendly Town

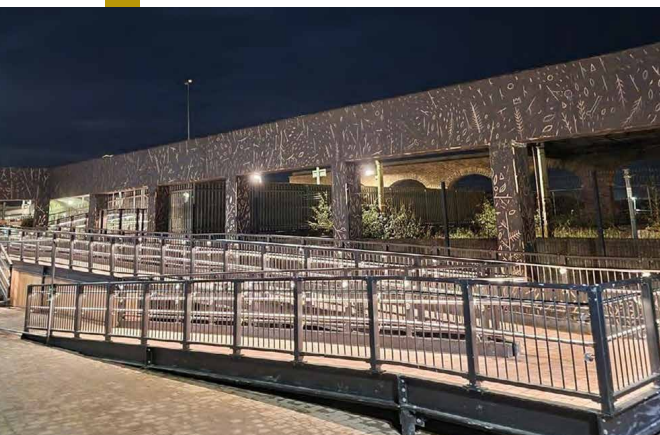


The town of Celbridge had a true desire to be designated the status of an Age Friendly Town and the community has worked tirelessly over the past few years to bring this about. What this means for the older people of Celbridge is that their main street is now fully accessible, safer, and more pleasurable for them as an experience.

They can now walk more safely, park their cars in the designated Age Friendly parking spaces, do their shopping, socialise, and rest on any one of the new Age Friendly seats that has been installed in the old and historical town of Celbridge. The older residents created a model of best practice with their innovative traffic calming measures.



# AGE FRIENDLY INITIATIVE



## KILKENNY COUNTY COUNCIL

### Kilkenny Age Friendly Train Station



The initiative’s aim was to make MacDonagh Station in Kilkenny City the first Age Friendly Train Station in Ireland. In order to achieve this, it was the first train station to undergo the World Health Organisation’s four stage process to be recognised as Age Friendly.



The project began in 2022 and included a walkability audit of the station and a number of meetings were held with the working group to agree on an action plan of improvements. There are now two Age Friendly car spaces and newly installed tactile paving for customers with a visual impairment.

This activity culminated in the station being awarded an Age Friendly Status Charter by Malcom Noonan, Minister of State for Heritage & Electoral Reform and Age Friendly Ireland on the 21<sup>st</sup> November 2022.

## LIMERICK CITY & COUNTY COUNCIL

### Crafting Connections



Crafting Connections is a dual outreach programme to Men’s and Women’s Sheds, and to Nursing Homes, funded under the Dormant Accounts Programme for Marginalised, Socially Excluded and Disadvantaged Communities and developed in 2022 by Limerick City and County Council Library Service.

This programme offered Men’s and Women’s Shed groups the opportunity to access and participate in a range of Library Services, including digital literacy and creativity, wellbeing and staying active.

Through an intergenerational shared craft project the programme engaged with nursing homes and primary schools in County Limerick to further build connections within local communities and facilitate creativity and learning.





## AGE FRIENDLY INITIATIVE



### WEXFORD COUNTY COUNCIL

## Wexford County Council - working towards a dementia friendly local authority.



Wexford County Council (WCC) ran a number of dementia-related initiatives to make it easier for people living with dementia to access its services, as well as initiatives in the

wider community including:

- Dementia Awareness Training for WCC Customer Services/Reception staff, as well as members of the emergency services including Fire Services, An Garda Síochána and Wexford Local Link
- Dementia Awareness training for businesses in Enniscorthy
- Sporting Memories with Wexford GAA & Alzheimer Society of Ireland (ASI)
- Wexford Dementia Alliance
- A range of art and cultural projects with WCC Arts Department and Culture Team
- Covid care concerts delivered in all day care centres and nursing homes during the pandemic

WCC was one of the founding members of the Wexford Dementia Alliance, established in 2022, which is a group of state and voluntary organisations, healthcare professionals, advocacy groups and carers who meet on a quarterly basis.



### WICKLOW COUNTY COUNCIL

## Intergenerational Digital Learning Supporting Seniors using their personal Digital Devices



In this initiative, transition year students stepped up to bridge the digital divide between generations. These students were trained to become tutors and equipped with the skills to teach older people how to access information and use their digital devices.

Each adult learner was paired with a dedicated tutor from transition year, ensuring a personalised approach to supporting them in the use of their own digital device, whether a smartphone, tablet or laptop. The sessions were tailored to address the needs of every individual, fostering a supportive and engaging learning environment. Through guidance the tutors provided instruction, and helped older adults gain confidence in navigating the digital landscape.

This initiative not only taught a valuable skill, it also fostered intergenerational bonds, nurtured mutual understanding and respect. As transition year students became tutors of digital literacy, they are also empowered themselves and gained considerably in terms of self-esteem and maturity.





# THE GLOBAL GOALS

For Sustainable Development







**Chambers**  
Ireland

**100**  
YEARS OF ADVANCING  
BUSINESS TOGETHER

 **@chambersofireland**  
**#ELGawards23**

**[www.chambers.ie](http://www.chambers.ie)**